

#TA064	#R22	#LINK
NOT-FITTED	150KX	0X
FITTED	-	-

SIGNAL NAMES AND WIRING FOR DISPATCHER III V.2

S22	D-RANGE	SIGNAL NAME
1	1	AUDIO-ENABLE
3	2	PTT/BID-IN
5	3	NIC
7	4	ALARM-AUDIO
9	5	RX-DATA-IN
11	6	ALARM-HOLD
13	7	CNL-SEL-OUT
15	8	PTT-OUT
2	9	CNL-SEL-IN
4	10	GND
6	11	FOOTSWITCH
8	12	PSK-OUT
10	13	ALARM-SENSE
12	14	GND
14	15	+13V8
16	-	-

SIGNAL NAMES AND WIRING FOR DISPATCHER III V.3

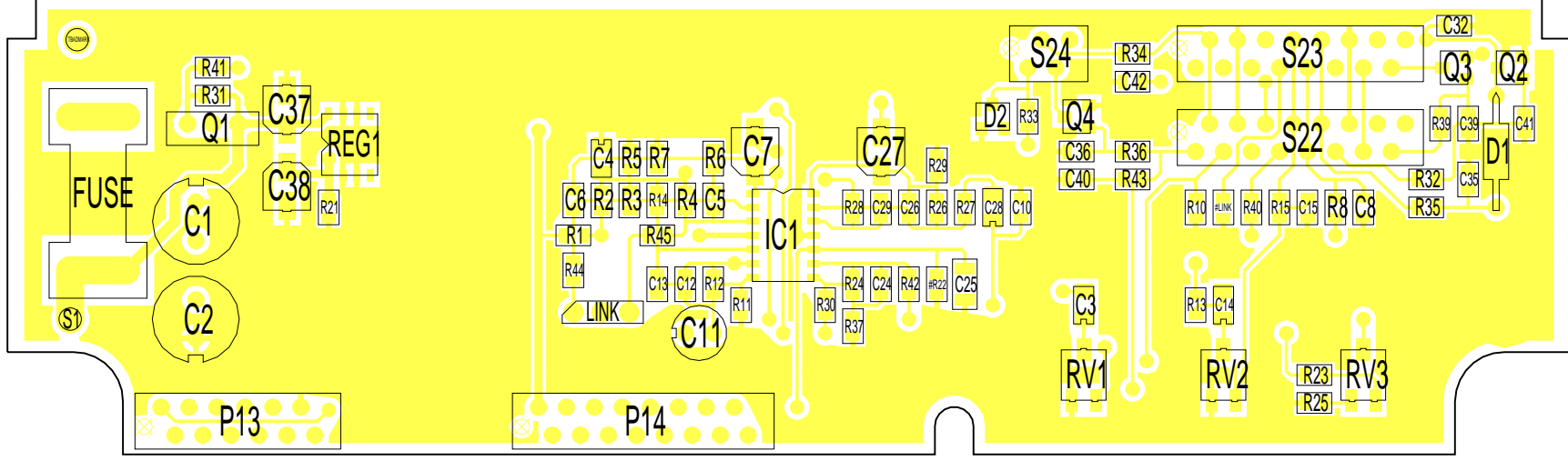
S23	D-RANGE	SIGNAL NAME
1	1	RX-AUDIO
3	2	RSS-IN
5	3	METER-N/C
7	4	GND-N/C
9	5	RX-DISC-AUD
11	6	RADIO-PWR-ON
13	7	CH-OUT
15	8	PTT-OUT
2	9	CH-IN
4	10	ANALOG-GND
6	11	EXT-SPKR-N/C
8	12	TX-AUDIO
10	13	ALARM-SENSE
12	14	GND
14	15	+13V8
16	-	-

4A	CHANGED TECHNOLOGY OF PCB TO SMD	M.HALL			S.CRAGG	13/12/95
3A	ADDED MECHANICAL PARTS TO BOM.	M.HALL	M.HALL	M.HALL	S.CRAGG	09/03/93
2C	ADDED MECHANICAL PARTS TO BOM.	M.HALL	M.HALL	D.ELDER	S.CRAGG	15/06/94
2B	CHANGED VALUE OF C11	M.HALL	OVERTOON	D.ELDER	S.CRAGG	03/12/92
2A		M.HALL	OVERTOON	D.ELDER	S.CRAGG	18/09/92
1B	AMMENDMENT TO ISSUE 1A	M.HALL	OVERTOON	D.ELDER	S.CRAGG	28/05/92
1A	PRODUCTION RUN.	M.HALL	OVERTOON	D.ELDER	S.CRAGG	
P1	PROTOTYPE	M.HALL	OVERTOON	D.ELDER	S.CRAGG	
REV/ISS	AMMENDMENTS	DRAWN	CHKD	D.O.	APVD	DATE

© TAIT ELECTRONICS

TA064-01
T2010 RAYWOOD INTERFACE

PROJECT: TA064-01 DESIGNER: HOVERTOON A006414A FILE NAME: A006414A FILE DATE: 28-10-97 NO SHEETS: 1



TAIT ELECTRONICS

IPN: 227-06401-04

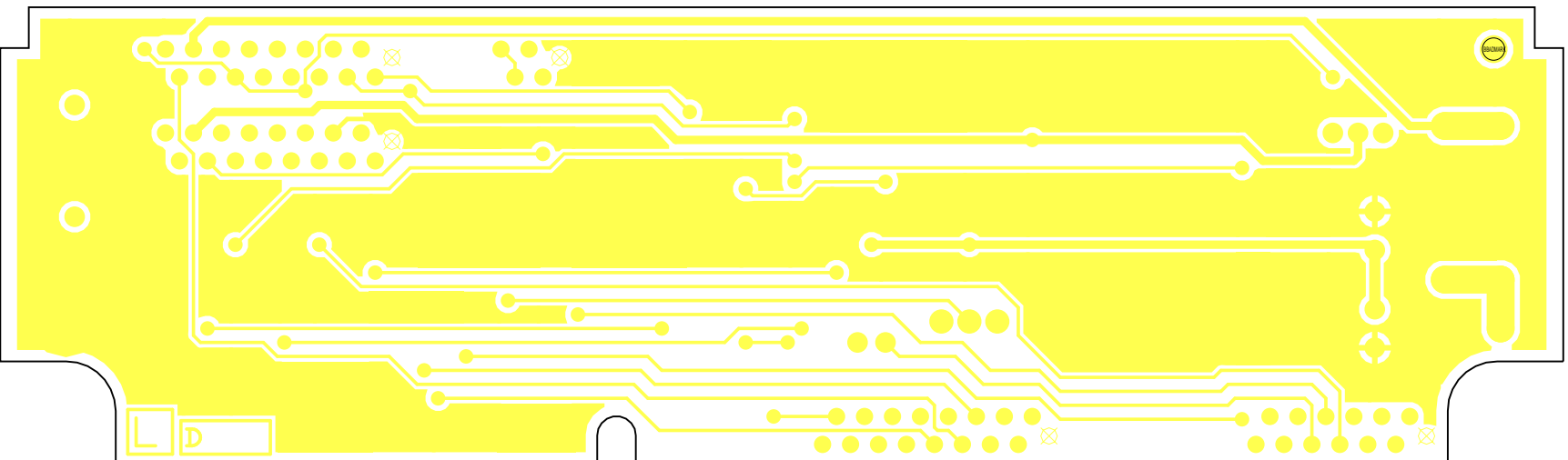
ISS: A

ID: 1.TA

DATE: 30 Oct 1997

TA064-01 PCB LAYOUT - TOP SIDE

Scale: 1:6:1 ; Rotation: 0 degrees



TAIT ELECTRONICS

IPN:
227-06401-04

ISS:
A

ID:
2.BA

DATE:
30 Oct 1997

TA064-01 PCB LAYOUT - BOTTOM SIDE

Scale: 1:6:1 ; Rotation: 0 degrees